



## **Rabbit anti Lambda Light chain Polyclonal Antibody**

**Alternative Name(s):** Immunoglobulin lambda light chain

### **Order Information**

- **Description:** Lambda Light chain
- **Catalogue:** 500-1884
- **Lot:** See label
- **Size:** 100ug/200ul
- **Host:** Rabbit
- **Clone:** nan
- **Application:** IHC(P)
- **Reactivity:** Hu

### **ANTIGEN PREPARATION**

Immunoglobulin Light chain

### **BACKGROUND**

Lambda light chains are polypeptide chains located in the cell membrane and cytoplasmic regions of normal B cells and plasma cells. The combination of lambda light chains and heavy chains forms immunoglobulin molecules. There are two classes of light chains found in immunoglobulins, kappa light chains and lambda light chains. Light chain production by lymphoid cells is genetically restricted such that the immunoglobulin molecules produced by an individual cell will only contain a single light chain class. This clonal restriction may be used to indicate the polyclonal or monoclonal nature of B cell and plasma cell populations. The ratio of Kappa to Lambda is about 2:1. The level of kappa or lambda can be greatly elevated in multiple myeloma or other B cell malignancies.

### **PURIFICATION**

The Rabbit IgG is purified by Epitope Affinity Purification

### **FORMULATION**

This affinity purified antibody is supplied in sterile Phosphatebuffered saline (pH7.2) containing antibody stabilizer

### **SPECIFICITY**

This antibody recognizes human Lambda Light chain. The other species not tested.

### **STORAGE**

The antibodies are stable for 24 months from date of receipt when stored at -20oC to -70oC. The antibodies can be stored at 2oC-8oC for three month without detectable loss of activity. Avoid repeated freezing-thawing cycles.

### **APPLICATIONS/SUGGESTED WORKING DILUTIONS\***

- Western Blot: 0.1-1 µg/ml
- ELISA: 0.01-0.1 µg/ml
- Immunoprecipitation: 2-5 µg/ml
- IHC: 2-10 µg/ml
- Flow cytometry: Not tested
- Molecular Weight: 45.0
- Positive Control: Kidney Tissue
- Cellular Location: Cell Membrane

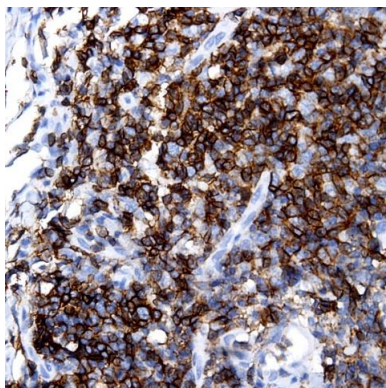
\*Optimal dilutions should be determined by researchers for the specific applications.

### **FOR RESEARCH USE ONLY.**

AbboMax, Inc 2528 Qume Drive, Suite 8, San Jose, California 95131, USA  
1 408-573-1898 (Tel). 1 408-573-1858 (Fax). [www.abbomax.com](http://www.abbomax.com) [info@abbomax.com](mailto:info@abbomax.com)



## DATA ATTACHMENTS



Immunohistochemistry: Human Tonsil (FFPE) stained with Rabbit anti-Lambda Light Chain (Cat#500-1884) at 1:200 for 10 min @ RT. Staining of formalin-fixed tissue requires boiling tissue sections in 10 mM Citrate Buffer, pH 6.0 for 10 min followed by cooling at RT for 20 min.

## REFERENCES

### FOR RESEARCH USE ONLY.

AbboMax, Inc 2528 Qume Drive, Suite 8, San Jose, California 95131, USA  
1 408-573-1898 (Tel). 1 408-573-1858 (Fax). [www.abbomax.com](http://www.abbomax.com) [info@abbomax.com](mailto:info@abbomax.com)